

Ferrari 296 , 2025

Ferrari 296 GTS 04/2025

Equipment

Apple CarPlay, Multimedia System - Bluetooth Audio Streaming and Digital Radio - DAB, Wireless Smartphone Charger, Front and Rear Parking Sensors, Rear Parking Camera, TPTMS - Tyre Pressure and Temperature Monitoring System, CCM - Carbon-Ceramic Brake System, Magnaride Suspension System - SCME-Frs, Manettino - Race Manettino, Power Steering, eSSC - Electronic Side Slip Control

Overview

The Ferrari 296 GTS 04/2025 is a petrol plug-in hybrid convertible designed for open-top driving and performance-focused use. %READMORE% This Ferrari 296 GTS in Cyprus offers a two-seat layout with a compact premium cabin.

Driving Performance

The vehicle is equipped with an automatic transmission. It provides responsive and composed driving for dynamic road use.

Interior and Equipment

The cabin accommodates two passengers. The interior is designed to provide comfort and convenience in a convertible layout.

Technologies and Assistants

The vehicle includes standard safety and driver assistance systems. These systems support convenience and confidence during everyday driving.

Exterior

The vehicle features a convertible body style finished in yellow. Its design combines an open-top format with a low two-door profile.

Specifications:

ID: XRA-790

Final Price: 368000.00 EUR


Interior Color: Black


Number of Seats: 2

Steering Side: Right

Condition: New

Number of Owners: 1

 2341 km

 3.0 l

 2WD

 Plug-in Hybrid Petrol

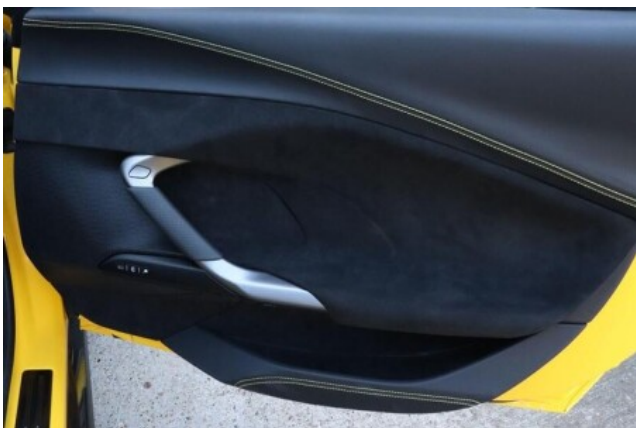
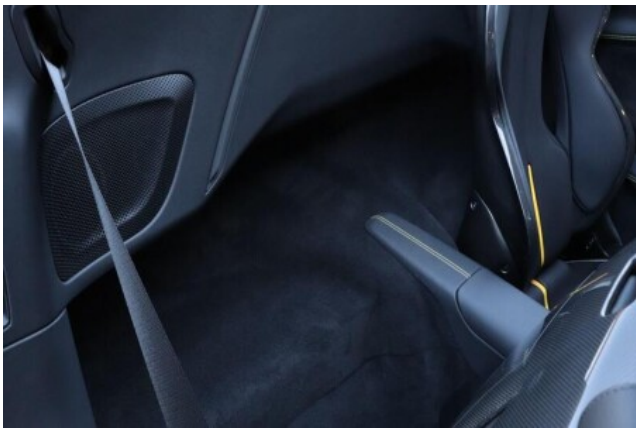
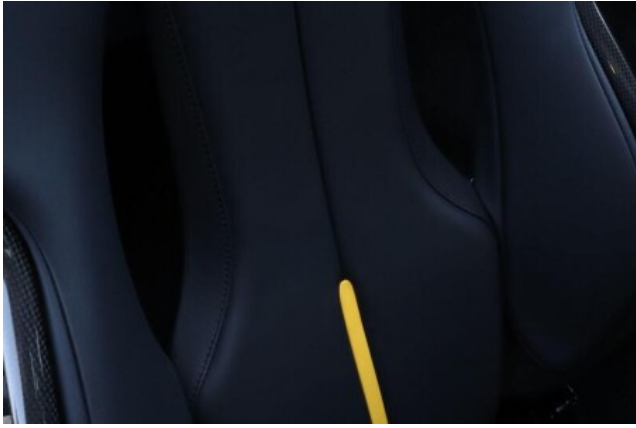
 Robot

 Convertible











PERSONALIZATION SPECIFICATIONS

SERIAL NUMBER: 315401 MODEL: 296 GTS

CONFIGURATION

| OPTION | DESCRIPTION | OPTION | DESCRIPTION |
|--------|-------------|--------|-------------|
| 001 | WHEELS | 001 | WHEELS |
| 002 | WHEELS | 002 | WHEELS |
| 003 | WHEELS | 003 | WHEELS |
| 004 | WHEELS | 004 | WHEELS |
| 005 | WHEELS | 005 | WHEELS |
| 006 | WHEELS | 006 | WHEELS |
| 007 | WHEELS | 007 | WHEELS |
| 008 | WHEELS | 008 | WHEELS |
| 009 | WHEELS | 009 | WHEELS |
| 010 | WHEELS | 010 | WHEELS |
| 011 | WHEELS | 011 | WHEELS |
| 012 | WHEELS | 012 | WHEELS |
| 013 | WHEELS | 013 | WHEELS |
| 014 | WHEELS | 014 | WHEELS |
| 015 | WHEELS | 015 | WHEELS |
| 016 | WHEELS | 016 | WHEELS |
| 017 | WHEELS | 017 | WHEELS |
| 018 | WHEELS | 018 | WHEELS |
| 019 | WHEELS | 019 | WHEELS |
| 020 | WHEELS | 020 | WHEELS |
| 021 | WHEELS | 021 | WHEELS |
| 022 | WHEELS | 022 | WHEELS |
| 023 | WHEELS | 023 | WHEELS |
| 024 | WHEELS | 024 | WHEELS |
| 025 | WHEELS | 025 | WHEELS |
| 026 | WHEELS | 026 | WHEELS |
| 027 | WHEELS | 027 | WHEELS |
| 028 | WHEELS | 028 | WHEELS |
| 029 | WHEELS | 029 | WHEELS |
| 030 | WHEELS | 030 | WHEELS |
| 031 | WHEELS | 031 | WHEELS |
| 032 | WHEELS | 032 | WHEELS |
| 033 | WHEELS | 033 | WHEELS |
| 034 | WHEELS | 034 | WHEELS |
| 035 | WHEELS | 035 | WHEELS |
| 036 | WHEELS | 036 | WHEELS |
| 037 | WHEELS | 037 | WHEELS |
| 038 | WHEELS | 038 | WHEELS |
| 039 | WHEELS | 039 | WHEELS |
| 040 | WHEELS | 040 | WHEELS |
| 041 | WHEELS | 041 | WHEELS |
| 042 | WHEELS | 042 | WHEELS |
| 043 | WHEELS | 043 | WHEELS |
| 044 | WHEELS | 044 | WHEELS |
| 045 | WHEELS | 045 | WHEELS |
| 046 | WHEELS | 046 | WHEELS |
| 047 | WHEELS | 047 | WHEELS |
| 048 | WHEELS | 048 | WHEELS |
| 049 | WHEELS | 049 | WHEELS |
| 050 | WHEELS | 050 | WHEELS |
| 051 | WHEELS | 051 | WHEELS |
| 052 | WHEELS | 052 | WHEELS |
| 053 | WHEELS | 053 | WHEELS |
| 054 | WHEELS | 054 | WHEELS |
| 055 | WHEELS | 055 | WHEELS |
| 056 | WHEELS | 056 | WHEELS |
| 057 | WHEELS | 057 | WHEELS |
| 058 | WHEELS | 058 | WHEELS |
| 059 | WHEELS | 059 | WHEELS |
| 060 | WHEELS | 060 | WHEELS |
| 061 | WHEELS | 061 | WHEELS |
| 062 | WHEELS | 062 | WHEELS |
| 063 | WHEELS | 063 | WHEELS |
| 064 | WHEELS | 064 | WHEELS |
| 065 | WHEELS | 065 | WHEELS |
| 066 | WHEELS | 066 | WHEELS |
| 067 | WHEELS | 067 | WHEELS |
| 068 | WHEELS | 068 | WHEELS |
| 069 | WHEELS | 069 | WHEELS |
| 070 | WHEELS | 070 | WHEELS |
| 071 | WHEELS | 071 | WHEELS |
| 072 | WHEELS | 072 | WHEELS |
| 073 | WHEELS | 073 | WHEELS |
| 074 | WHEELS | 074 | WHEELS |
| 075 | WHEELS | 075 | WHEELS |
| 076 | WHEELS | 076 | WHEELS |
| 077 | WHEELS | 077 | WHEELS |
| 078 | WHEELS | 078 | WHEELS |
| 079 | WHEELS | 079 | WHEELS |
| 080 | WHEELS | 080 | WHEELS |
| 081 | WHEELS | 081 | WHEELS |
| 082 | WHEELS | 082 | WHEELS |
| 083 | WHEELS | 083 | WHEELS |
| 084 | WHEELS | 084 | WHEELS |
| 085 | WHEELS | 085 | WHEELS |
| 086 | WHEELS | 086 | WHEELS |
| 087 | WHEELS | 087 | WHEELS |
| 088 | WHEELS | 088 | WHEELS |
| 089 | WHEELS | 089 | WHEELS |
| 090 | WHEELS | 090 | WHEELS |
| 091 | WHEELS | 091 | WHEELS |
| 092 | WHEELS | 092 | WHEELS |
| 093 | WHEELS | 093 | WHEELS |
| 094 | WHEELS | 094 | WHEELS |
| 095 | WHEELS | 095 | WHEELS |
| 096 | WHEELS | 096 | WHEELS |
| 097 | WHEELS | 097 | WHEELS |
| 098 | WHEELS | 098 | WHEELS |
| 099 | WHEELS | 099 | WHEELS |
| 100 | WHEELS | 100 | WHEELS |



